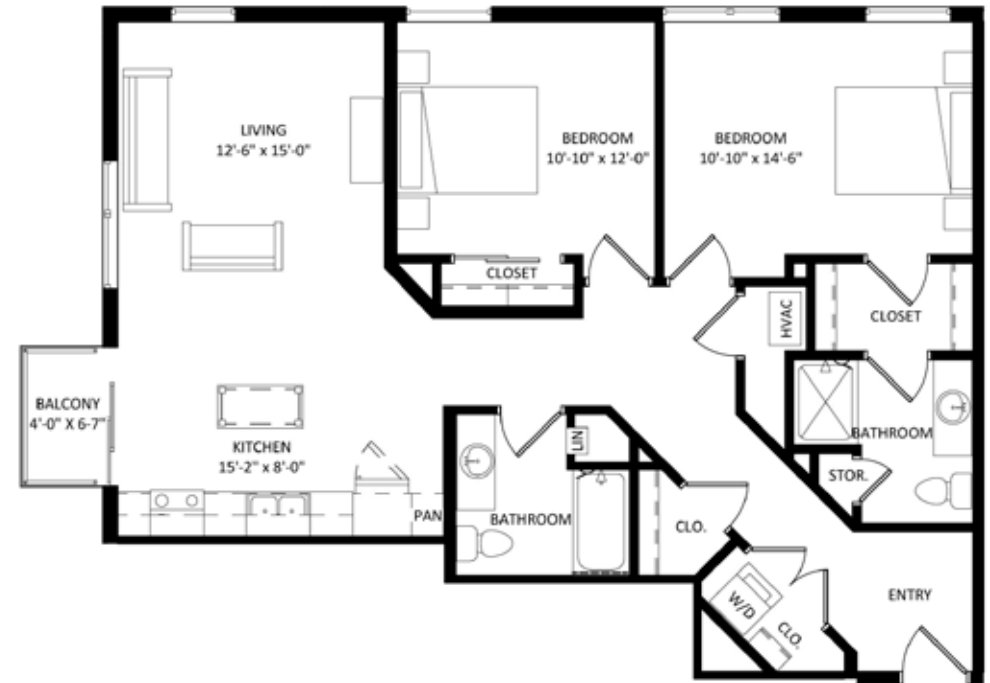




Unit 436



Unit Detail:

- 2 Bedrooms
- 2 Bathrooms
- 1136 Square Feet
- Private Balcony/Patio
- Walk-In Closet
- Corner Unit
- In-Unit Washer/Dryer
- Hard Surface Flooring
- Stainless Appliances
- Private High-Speed Internet
- Tile Backsplashes
- Quartz Countertops
- Solar Shades
- Expansive Windows

Property Amenities:

- Community Lounge and Game Room
- Community Media Room
- Fitness Center
- Sauna
- Package Room
- Courtyard with Grills and Seating
- Dog Wash Station
- Connected to Bike Path and Central Park Corridor

LEASING INFORMATION:

Call 608.233.6000 Visit PrimeUrbanProperties.com or email Info@PrimeUrbanProperties.com